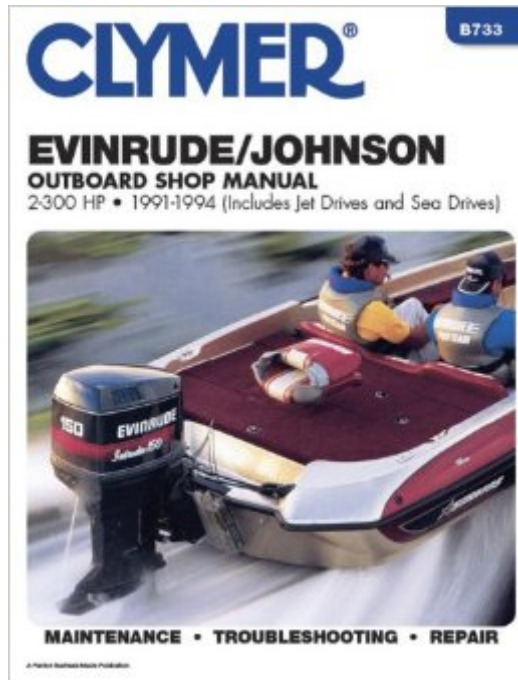


The book was found

Clymer Evinrude / Johnson Outboard Shop Manual: 2-300 HP Outboards, 1991-1994



Synopsis

2.0 HP, 2.3 HP, 3 HP, 3.3 HP, 4 HP, 4 HP Deluxe, 6 HP, 8 HP, 9.9 HP, 15 HP, 20 HP, 25 HP, 28 HP, 30 HP, 35 HP, 35 Jet, 40 HP, 48 HP, 50 HP, 60 HP, 65 Jet, 70 HP, 80 Jet, 85 HP, 88 HP, 90 HP, 100 HP, 105 Jet, 115 HP, 120 HP, 140 HP, 150 HP (60Â V6), 150 HP

Book Information

Paperback: 776 pages

Publisher: Haynes Manuals N. America, Inc.; 1st edition (May 24, 2000)

Language: English

ISBN-10: 0892876204

ISBN-13: 978-0892876204

Product Dimensions: 8.2 x 1.5 x 10.8 inches

Shipping Weight: 3.7 pounds (View shipping rates and policies)

Average Customer Review: 4.5 out of 5 starsÂ Â See all reviewsÂ (24 customer reviews)

Best Sellers Rank: #340,909 in Books (See Top 100 in Books) #44 inÂ Books > Engineering & Transportation > Transportation > Ships > Repair & Maintenance #285 inÂ Books > Reference > Encyclopedias & Subject Guides > Gardening #309 inÂ Books > Crafts, Hobbies & Home > Gardening & Landscape Design > Reference

Customer Reviews

This book has more information than you will probably ever need. The book is organized very well and has plenty of pictures. The only downside is it fails to give you enough tips to make the job easier. For example: I used the book to replace my water pump housing on my 1993 70hp. It went into good detail about rebuilding the pump and removing the lower unit, but failed to tell you how to position the shifter rod so it would be easy to reconnect. Little things like this make a big difference to me. The troubleshooting section is first rate by the way.

Mechanically I found this book to be decent enough for my 1993 90 hp Evinrude. Electrically about 75 percent of the wiring diagram matches the motor. Color codes for the wiring are off, I would say this is due to trying to cover too many different engines with one diagram.

I have had the book for one night and have already solved my problem. Reading through the troubleshooting section on voltage regulators for my 70 Horse was like reading about my own experience...It hit every symptom.

We bought this shop manual for our son who was facing an \$800+ repair bill on his outboard. He's not a mechanic but was able, with the help of the manual, do the repairs himself including replacing some other problem parts for around \$100. While it will never replace the experience of having done it before, it gives enough information to give you a fighting chance at getting it right the first time. Highly recommend.

The supplier provided 3excellent service in the delivery of this order. I needed this reference to change the water pump in a 4 hp Johnson outboard. The illustrations and directions were excellent and the job was a complete success.

Bought this for maintenance of my Johnson 40hp outboard (and repair if necessary). Much better manual than the "Seloc" manual that I purchased previously (and less expensive, too!) for an earlier model motor. Much more model specific and the photos and illustrations are much clearer. I highly recommend this manual for anyone who does their own maintenance and repair on their motors.

I purchased a used Evinrude/Johnson Outboard Shop Manual 2-300 Hp, 1991-1994. The manual took a little longer than I thought it would to get here but when it did get here i couldn't have been more pleased. It was in perfect condition and the price for this manual was awesome. I will absolutely purchase from them again. Thank you. Sincerely, Richard Williams
DomainMasters.NET
Complete Web Hosting Solutions

Book is in excellent condition! very informative for what i was looking for. makes diagnosing simple problems easy. Will save me a ton of money and time, rather than taking it into a boat shop. Thank you.

[Download to continue reading...](#)

Clymer Evinrude / Johnson Outboard Shop Manual: 2-300 HP Outboards, 1991-1994

Johnson/Evinrude Outboards, 1973-91 Repair Manual, Covers all 60-235 HP, 3-Cylinder, V4 and V6, 2-Stroke Models, Includes Jet Drives (Seloc) Evinrude/Johnson 2-40 HP OB 73-1990 (Clymer Marine Repair Series) Evinrude/Johnson 48-235 HP OB 73-90 (Clymer Marine Repair Series)

Johnson/Evinrude Outboards, All V Engines, 1992-01 International Harvester Shop Manual Series 300 300 Utility - 1h - 10 (I & T Shop Service) Hungry Girl 300 Under 300: 300 Breakfast, Lunch & Dinner Dishes Under 300 Calories Volvo Penta Stern Drive Shop Manual 2001-2004 (Clymer

Marine Repair) Evinrude Johnson and the Legend of OMC Mercury Outboard Shop Manual: 45-225 Hp, 1972-1989 (B726) Case Shop Manual C-37 (2090-2094-2290-2294-2390-2394-2590-2594) (I & T Shop Service) Ford Shop Manual Models 3230 3430 3930 4630+ (I & T Shop Service Manuals) Ferguson Shop Manual: Models Te20, To20, To30 (I & T Shop Service) International Harvester Shop Manual (I & T Shop Service Manuals) Polaris Sportsman 400, 450 & 500 1996-2013 Manual (Clymer Motorcycle Repair) Seloc Honda Outboards 2002-2014 Repair Manual: 2.0-250 Hp, 1-4 Cylinder, V6 Models, Including Jet Drives (Seloc Marine Manuals) Outboard Motors Maintenance and Repair Manual AC Maintenance & Repair Manual for Outboard Motors (Adlard Coles Book of) Harley-Davidson XL883 XL1200 Sportster 2004-2013 (Clymer Manuals: Motorcycle Repair) 30 Under 300: healthy, unique recipes under 300 calories (gluten free, sugar free, dairy free, vegan)

[Dmca](#)